

HILLSBOROUGH

Figure 1609A

Ultimate Design Wind Speeds

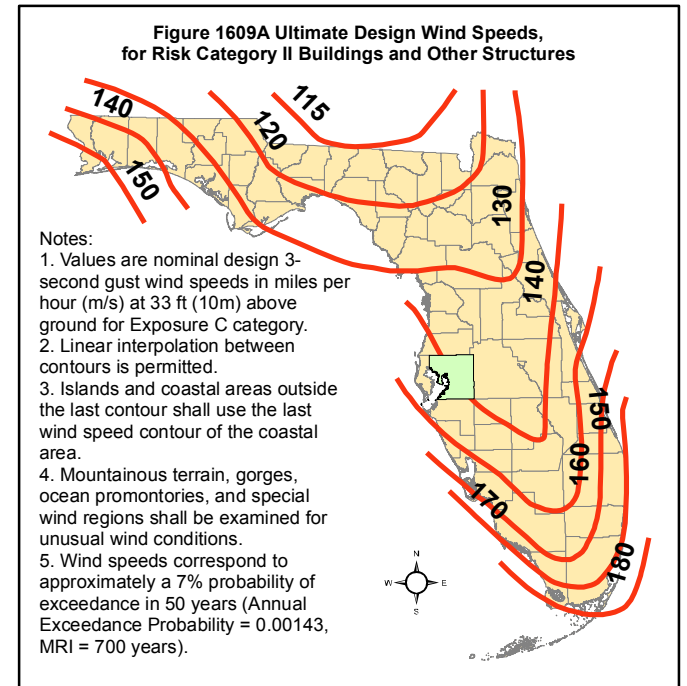
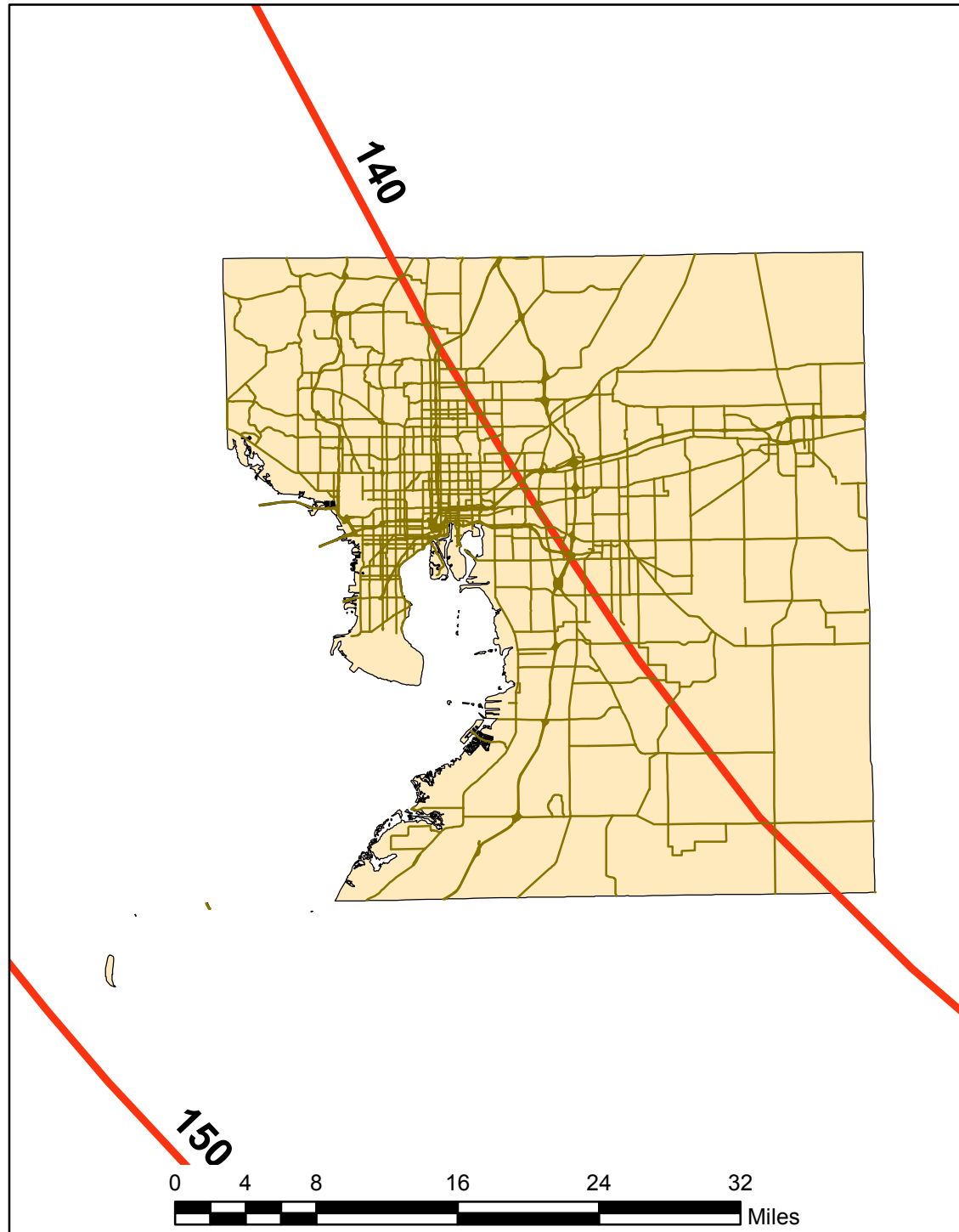
Risk Category II Buildings

BASIC WIND SPEED. The basic wind speed in miles per hour, for the development of wind loads, shall be determined from Figure 1609. The exact location of wind speed lines shall be established by local ordinance using recognized physical landmarks such as major roads, canals, rivers and lake shores whenever possible.

WIND-BORNE DEBRIS REGION. Areas within hurricane-prone regions located:

1. Within 1 mile (1.61 km) of the coastal mean high water line where the ultimate design wind speed V_{ult} is 130 mph (48 m/s) or greater; or
2. In areas where the ultimate design wind speed V_{ult} is 140 mph (53 m/s) or greater

For Risk Category II buildings and structures and occupancy category III buildings and structures, except health care facilities, the windborne debris region shall be based on Figure 1609A. For occupancy category IV buildings and structures and occupancy category III health care facilities, the windborne debris region shall be based on Figure 1609B.



Sources: Florida Department of Community Affairs, Codes and Standards Division; Applied Research Associates, Inc.; Florida Geographic Data Library